

SUNDAY VI THROUGH THE YEAR

'Proper' of the Mass

**Set to Gregorian Tones
With Organ Accompaniment**

by

Samuel F. Weber, O.S.B.



2006

The 'Proper' of the Mass
for Sundays and Solemnities of the Liturgical Year
commissioned by
Prince of Peace Catholic Church,
Taylors, SC.

2006

Acknowledgements

The English translation of the Psalm responses, the Gospel Acclamation verses, from *The Lectionary for Mass* © 1968, 1981, 1997, ICEL ; the English translation of the Entrance and Communion Antiphons from *The Roman Missal* © 1973 ICEL, Washington, D.C. All rights reserved.

Translations of the Psalms based on *The Book of Psalms* © 1950 and 1995 by the Confraternity of Christian Doctrine, Washington, D.C.

Translation of the Offertory Verse based on the *Douai-Reims version*.

Harmonizations of Latin Psalm tones adapted by the editor from the settings of Carlo Rossini in his classic work '*Proper*' of the Mass for the Entire Liturgical Year, 1933 ff., and from the various harmonizations of Achille Bragers.

English tones and harmonizations by Samuel F. Weber, O.S.B.

Musical settings and compilation © 2006 Saint Meinrad Archabbey, St. Meinrad, IN 47577 U.S.A. All rights reserved.

On the cover : MEDIEVAL CHOIR, Anonymous woodcut from *Der Spiegel des Menschlichen lebens*. Augsburg, 1479.

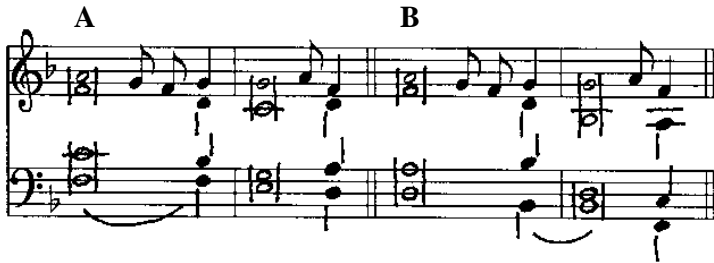
Contact the editor :

Rev. Samuel F. Weber, O.S.B.
Wake Forest University
The Divinity School
Box 7719
Winston-Salem, NC 27109-7719 U.S.A.
TEL 336.758.4289
EMAIL webersf@wfu.edu

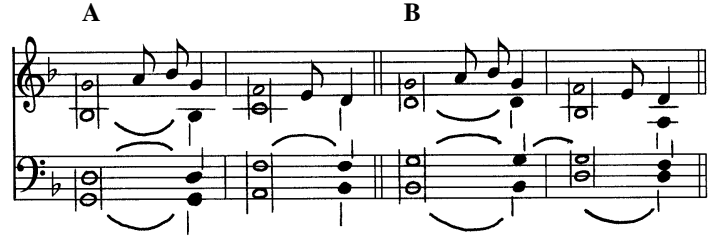
One copy of this project is made available to interested parties for educational purposes only, on a not-for-profit, not for publication basis, for private distribution only. It is hoped that this project will result in a permanent resource once the expected English translation of the *Missale Romanum* (2003) is promulgated.

SUNDAY VI THROUGH THE YEAR

Tone 6 F



Tone 7 d



INTROIT

1. Lord, be my rock of safety, *
the stronghold that saves me.
2. For the honor of your name, *
lead me and guide me.
3. Glory be to the Father, and to the Son, *
and to the Holy Spirit.
4. As it was in the beginning, /
is now and *ever shall be*, *
world without end. **Amen.**

*Repetition of the Introit Antiphon : **

Lord, be my rock of safety, |
the stronghold that saves me. |
for the honor of your name, |
lead me and | **guide** me.

OFFERTORY

1. Keep my feet steadfast *in your paths*, *
that my footsteps be *not moved*.
2. Incline your ear, and hear my words, /
show forth your wonderful **mercies**, *
who save those who trust in you, **O Lord.**

COMMUNION

1. God loved the *world so much*, *
he gave his only **Son**,
2. that all who believe in him *might not perish*, *
but might have *eternal life*.

(*)
*Organ accomp.
for the repetition
of the Introit.*



SUNDAY VI THROUGH THE YEAR

Introit

Esto mihi in Deum protectorem.

Psalm 30 : 3-4

Antiphon :

6. Lord, be my rock of safe-ty, * the stronghold that saves me. For the hon-or of your

name, lead me and guide me.

Introit

saves me. For the hon-or of your name, lead me and guide me.

Psalm Tone

Chant melodies and organ harmonies arranged after traditional sources by Samuel F. Weber, O.S.B. © 2006
Saint Meinrad Archabbey, St. Meinrad, IN 47577-1010 U.S.A. All rights reserved. EMAIL : webersf@wfu.edu

Sunday VI Through the Year

Offertory

Benedictus es . . . in labiis meis.

Psalm 118 : 12. 13

4 A. Bless- ed are you, O Lord, * teach me your stat-utes. With my lips I de- clare

all the judg- ments of your mouth.

Offertory

IV A

B

Less-ed are you, O Lord, * teach me your stat-utes.

With my lips I de-clare all the judgments of your mouth.

Psalm Tone

Sunday VI Through the Year

Communion

Manducaverunt.

Psalm 77 : 29-30

1. They ate and were filled ; * the Lord gave them what they want- ed : they were not

Musical notation for the first part of the Communion chant. It consists of two staves: a treble staff and a bass staff. The time signature is 7/4. The melody is written in the treble staff, and the organ accompaniment is in the bass staff. The music is in a minor key, indicated by one flat (B-flat).

de- prived of their de- sire.

Musical notation for the second part of the Communion chant. It consists of two staves: a treble staff and a bass staff. The time signature is 7/4. The melody is written in the treble staff, and the organ accompaniment is in the bass staff. The music is in a minor key, indicated by one flat (B-flat).

Communion

Musical notation for the Communion chant with lyrics. It consists of two staves: a treble staff and a bass staff. The time signature is 7/4. The melody is written in the treble staff, and the organ accompaniment is in the bass staff. The music is in a minor key, indicated by one flat (B-flat). The lyrics are: **T**HEY ate and were filled ; * the Lord gave them what

they want-ed : they were not de- prived of their de- sire.

Psalm Tone

Musical notation for the Psalm Tone. It consists of two staves: a treble staff and a bass staff. The time signature is 8/8. The melody is written in the treble staff, and the organ accompaniment is in the bass staff. The music is in a minor key, indicated by one flat (B-flat).

Sunday VI Through the Year

Communion

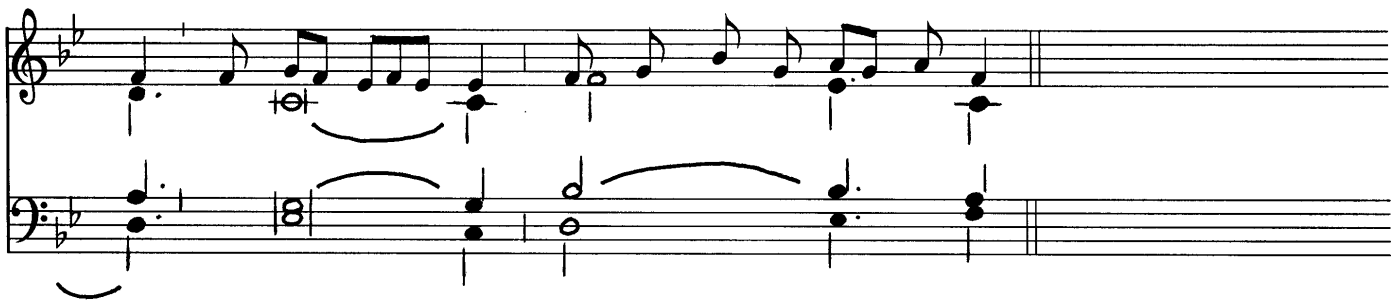
Sic Deus dilexit mundum.

John 3 : 16

8. God loved the world so much, * he gave his on- ly Son, that all who be- lieve in

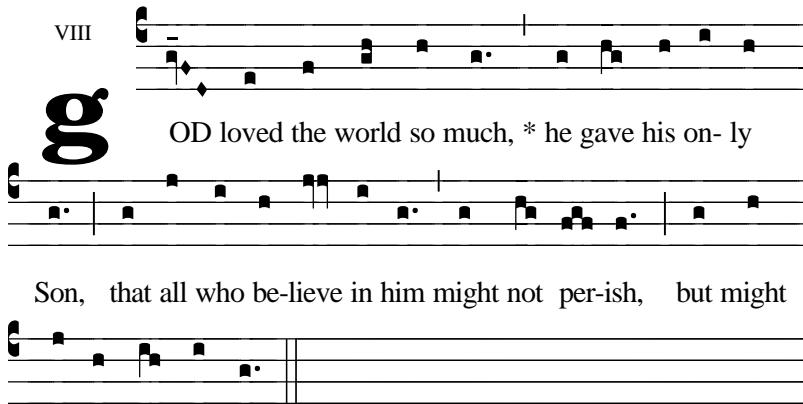


him might not per- ish, but might have e- ter- nal life.



Communion

VIII



OD loved the world so much, * he gave his on- ly

Son, that all who be- lieve in him might not per- ish, but might

have e- ter- nal life.

Psalm Tone

